

WELCOME CROESO

THE GREAT BIG GREEN WEEK

Welcome to the Pre-Application Consultation for the proposed Y Bryn onshore windfarm

taking place in the month that features 'The Great Big Green Week 2023'. This initiative in Wales and across the UK is the biggest ever celebration of community action to tackle climate change and protect nature.

We have been refining our plans and developing our proposal in more detail, since our last consultation in Autumn 2021. These exhibition boards and accompanying materials explain how our latest plans have informed the draft planning application, which has been influenced by ongoing survey and assessment work, as well as feedback from our two phases of previous consultation.

As this project will deliver in excess of 10MW of wind energy it will constitute a Development of National Significance (DNS) under the Planning (Wales) Act 2015. An application must be made to Planning and Environment Decisions Wales (PEDW), which will make a recommendation to Welsh Ministers on whether or not to grant planning permission. The proposal displayed on these boards is the result of extensive surveys, assessments and consultation feedback, and summarises the key elements of the draft planning application that will be submitted to PEDW.

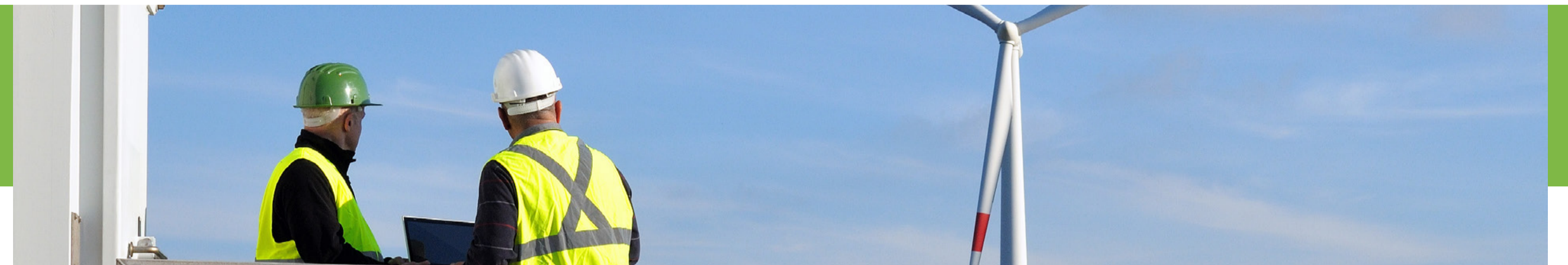
The revised proposal for Y Bryn could deliver up to 130MW of renewable energy generation, equivalent to the annual needs of 68% of households in Neath Port Talbot and Bridgend combined, whilst offsetting over 137,000 tonnes of carbon dioxide emissions from fossil fuel generation each year.*

Croeso i'r Ymgynghoriad Cyn Ymgeisio am fferm wynt ar y tir arfaethedig Y Bryn a gynhelir yn ystod mis 'Wythnos Werdd Fawr 2023' a ddathlir yng Nghymru a ledled y DU. Dyma'r dathliad mwyaf erioed o weithredu cymunedol i fynd i'r afael â'r newid yn yr hinsawdd a diogelu byd natur.

Rydym wedi bod yn mireinio ein cynlluniau ac yn datblygu ein cynnig yn fanylach ers ein hymgynghoriad diwethaf yn Hydref 2021. Mae'r byrddau arddangos hyn a'r deunyddiau cysylltiedig yn egluro sut mae ein cynlluniau diweddaraf wedi llywio'r cais cynllunio drafft, sydd wedi'i ddylanwadu gan waith arolygu ac asesu sy'n mynd rhagddynt, yn ogystal ag adborth o'n dau gam ymgynghori blaenorol.

Bydd y prosiect hwn yn darparu mwy na 10MW o ynni'r gwynt, felly caiff ei ystyried yn Ddatblygiad o Arwyddocâd Cenedlaethol (DAC) yn unol â Deddf Cynllunio (Cymru) 2015, a bydd yn rhaid anfon cais at Benderfyniadau Cynllunio ac Amgylchedd Cymru (PEDW), a fydd yn cynnig argymhelliad i Weinidogion Cymru ynghylch rhoi caniatâd cynllunio ai peidio. Mae'r cynnig a arddangosir ar y byrddau hyn yn cael ei lywio gan y cais cynllunio drafft a gaiff ei anfon at PEDW.

Gallai'r cynnig diwygiedig ar gyfer Y Bryn gynhyrchu 130MW o ynni adnewyddadwy, sy'n gyfystyr ag anghenion blynyddol 68% o'r aelwydydd yng Nghastell-nedd Port Talbot a Phen-y-bont ar Ogwr gyda'i gilydd, gan wrthbwyso dros 137,000 tunnell fetrig o allyriadau carbon deuocsid yn deillio o gynhyrchu trydan gan ddefnyddio tanwydd ffosil bob blwyddyn.



Feedback from the Phase 2 Consultation/ Adborth o'r Ymgynghoriad Cam 2

The draft application is a result of feedback received from the local community and technical consultees to date.

We are grateful for the significant level of response and information received and worked hard to address this feedback in this draft planning application. Key issues raised in relation to the early proposal included:

Mae'r cais drafft yn ganlyniad i adborth a gafwyd gan y gymuned leol ac ymgynghoreion technegol hyd yn hyn.

Rydym yn ddiolchgar am lefel sylweddol yr ymateb a'r wybodaeth a gafwyd ac rydym wedi gwneud ein gorau glas i fynd i'r afael â'r adborth hwn yn ein cais cynllunio drafft. Roedd y materion allweddol a godwyd mewn perthynas â'r cynnig cynnar yn cynnwys:



Visual and landscape impacts
Effeithiau gweledol ac effeithiau ar y dirwedd



Turbine noise
Sŵn tyrbinau



Traffic and construction
Traffig ac adeiladu



Amenity uses (such as walking, mountain biking and horse-riding)
Defnydd at ddibenion hamdden (megis cerdded, beicio mynydd a marchogaeth)



Forestry impacts
Effeithiau ar Goedwigoedd



Wildlife
Bywyd Gwylt

The above points, and others, have all been assessed in detail by the project team. Further information about how we are addressing any issues raised can be found summarised at this exhibition.

Mae'r pwyntiau uchod, ac eraill, oll wedi'u hasesu gan dîm y prosiect. Gellir gweld crynodeb o wybodaeth ychwanegol am ein dulliau o fynd i'r afael ag unrhyw faterion a godwyd yn yr arddangosfa hon.



Timeline / Llinell Amser

Consultation Phase 1/ Cyfnod Ymgynghori 1

Introduction phase of consultation, to discuss the principle of the project. Feedback from this phase has helped refine the proposal shown at Phase 2. At this stage we consulted on 'up to 26 turbines, 250m in height'.

Y cam ymgynghori rhagarweiniol, i drafod egwyddor y prosiect. Mae adborth o'r cam hwb wedi helpu i fireinio'r cynnig a ddangoswyd yng Ngham 2.

Consultation Phase 2/ Cam Ymgynghori 2

We consulted on the amended proposal from Phase 1, seeking further feedback to help refine the plans. At this stage we had reduced the turbine count from 26 to 21, and reduced the height of some turbines.

Fe wnaethom ymgynghori ynghylch y cynnig diwygiedig o Gam 1, gan geisio rhagor o adborth i helpu i fireinio'r cynlluniau.

Pre-Application Consultation/ Ymgynghoriad Cyn Ymgeisio

At this final stage of the consultation phase, we have the full draft planning application available for review and are inviting comments on these draft documents. We are now consulting on proposals for 18 turbines, some of which have been relocated, and others reduced in height.

Yn ystod y cam olaf hwn o'r cyfnod ymgynghori, mae'r cais cynllunio drafft llawn ar gael gennym i'w adolygu ac rydym yn eich gwahodd i gynnig sylwadau am y dogfennau drafft hyn.

Application Submission/ Cyflwyno Cais

Following Pre-Application Consultation, we will analyse the feedback received and prepare the Pre-Application Consultation report which will accompany the planning application to be submitted to PEDW.

Yn dilyn Ymgynghori Cyn Ymgeisio, byddwn yn dadansoddi'r adborth a gafwyd ac yn paratōi'r adroddiad Ymgynghori Cyn Ymgeisio a fydd yn cyd-fynd â'r cais cynllunio i'w anfon at PEDW.

Summer
2021

Haf
2021

Autumn
2021

Hydref
2021

Summer
2023

Haf
2023

Winter
2023

Gaeaf
2023

We are currently here
Rydym yma ar hyn o bryd

To get in touch or find out more:

info@ybryn-windfarm.cymru

0800 699 0081 (Freephone)

www.ybryn-windfarm.cymru

@ybrynwindfarm

OUR REFINED PROPOSAL EIN CYNNIG DIWYGIEDIG

Changes from Autumn 2021 to Pre-Application Consultation

The plan on this board illustrates how we have developed our proposals in response to feedback and further survey and assessment work. We have sought to address key issues, including:

- Reducing the number of proposed turbines from 21 to 18 to reduce visibility impact.
- Removed associated access tracks, crane pads to the removed turbines.
- Reducing tip height for T9 (now T7) from 250m to 230m to reduce visibility impact from Bryn village.
- Reducing tip heights for T16 (now T14) and T17 (now T15) from 250m to 206m.
- Relocating T8 (now T6) and T9 (now T7) to reduce visibility from Bryn village.
- Redesigning tracks to turbines after relocation.
- Borrow pits around T8 and T9 (now T6 and T7) were redesigned.
- Changes were made to the tree felling plan and habitat enhancement plans following further assessments and agreements.

Biodiversity Net Benefit

We have also been working hard to identify specific measures to help deliver a Biodiversity Net Benefit. These include:

- Restoration of broadleaved woodland
- Creation of open ground
- Bracken control
- Pond creation
- Wet woodland restoration
- Removal of invasive species

Access Management and Enhancement

Working in collaboration with NRW (as land manager), we have identified a number of measures to provide enhancement to existing recreational resources:

- Restoration of local PROs
- Upgrading of the Penhydd and Blue Scar trails
- Measures to promote greater use of e-Bikes, including potential installation of charging stations in agreed locations
- Exploring measures to provide and promote a strategic link between Afan Forest Park and Margam Park trails

All of the above measures will be supported by a new Access Management and Enhancement (AMEP) Fund.

Newidiadau o Hydref 2021 i'r Ymgynghoriad Cyn Ymgeisio

Mae'r cynllun ar y bwrdd hwn yn dangos sut rydym wedi datblygu ein cynnig mewn ymateb i adborth a rhagor o arolygu ac asesu. Rydym wedi ceisio mynd i'r afael â materion allweddol, gan gynnwys:

- Lleihau nifer y tyrbinau arfaethedig o 21 i 18 i leihau'r effaith ar olygfeydd.
- Diddymu traciau mynediad cysylltiedig a phadiau craeniau'r tyrbinau sydd wedi'u diddymu.
- Lleihau uchder blaenau T9 (nawr T7) o 250m i 230m, er mwyn lleihau'r effaith ar olygfeydd o bentref Bryn.
- Lleihau uchder y blaenau T16 (nawr T14) a T17 (nawr T15) o 250m i 206m.
- Adleoli tyrbinau T8 (nawr T6) a T9 (nawr T7) i sicrhau eu bod yn llai amlwg o bentref Bryn.
- Ailgynllunio traciau at tyrbinau ar ôl eu hadleoli.
- Cafodd pylau benthyg o amgylch T8 a T9 (nawr T6 a T7) eu hailgynllunio.
- Gwnaethpwyd newidiadau i'r cynllun torri coed ac i gynlluniau gwella cynefinoedd yn dilyn rhagor o asesiadau a chytundebau.

Budd Net o ran Bioamrywiaeth

- Adfer coetir llydanddail
- Creu tir agored
- Rheoli rhedyn
- Creu pwll
- Adfer coetir gwlyb
- Cael gwared ar rywogaethau ymledol

Rheoli a Gwella Mynediad

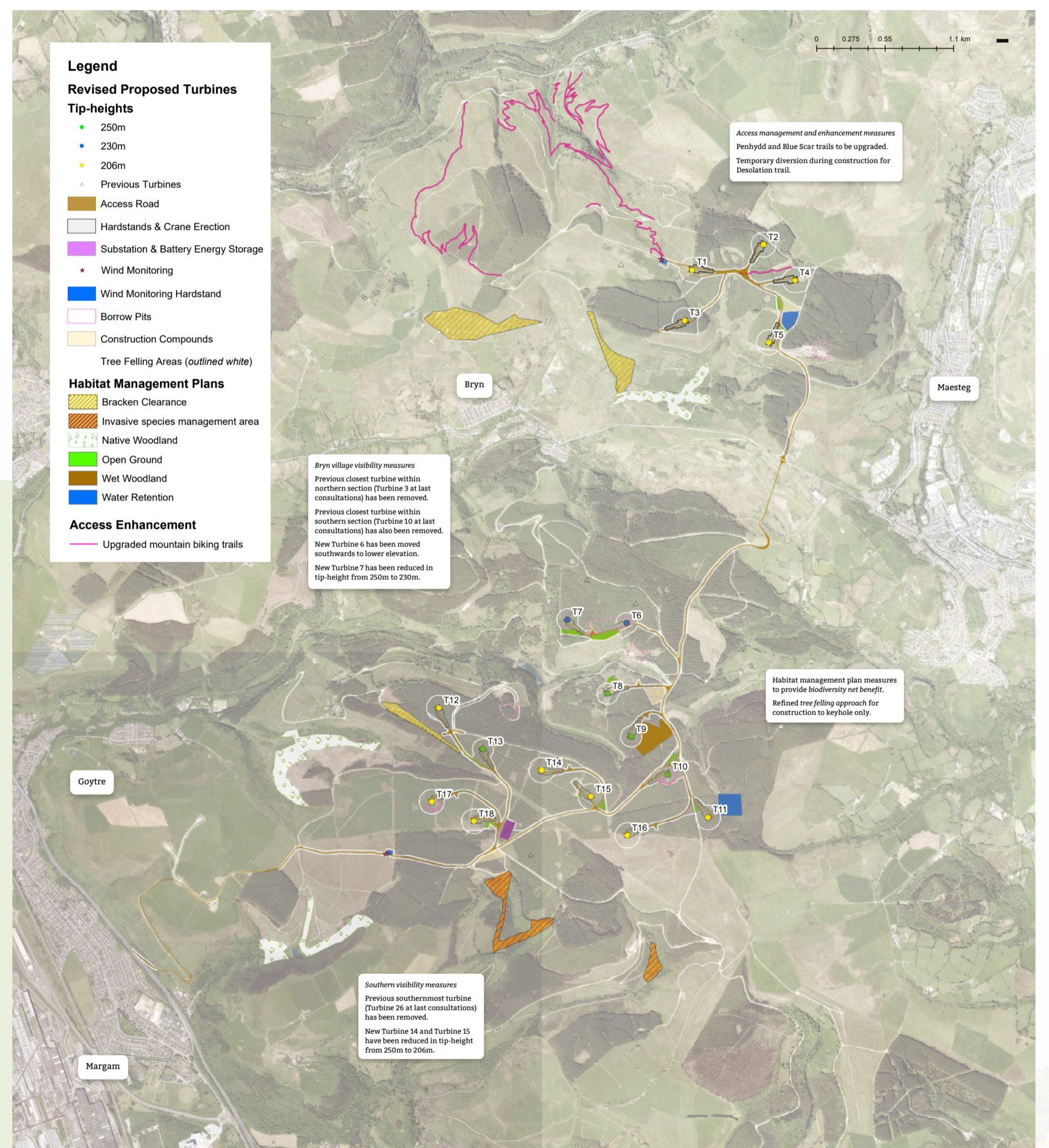
Gan weithio ar y cyd â CNC (fel rheolwr tir), rydym wedi nodi nifer o fesurau i wella adnoddau hamdden presennol:

- Adfer Hawliau Tramwy Cyhoeddus lleol
- Uwchraddio llwybrau Penhydd a Blue Scar
- Mesurau i hyrwyddo mwy o ddefnydd o e-Feiciau, gan gynnwys y posibilrwydd o osod gorsafoedd gwefru mewn lleoliadau y cytunwyd arnynt
- Archwilio mesurau i ddarparu a hyrwyddo cyswilt strategol rhwng llwybrau Parc Coedwig Afan a Pharc Margam

Bydd yr holl fesurau uchod yn cael eu cefnogi gan Gronfa Rheoli a Gwella Mynediad newydd.



Image of wind turbine for indicative purposes only



To get in touch or find out more:

info@ybryn-windfarm.cymru

0800 699 0081 (Freephone)

www.ybryn-windfarm.cymru

@ybrynwindfarm

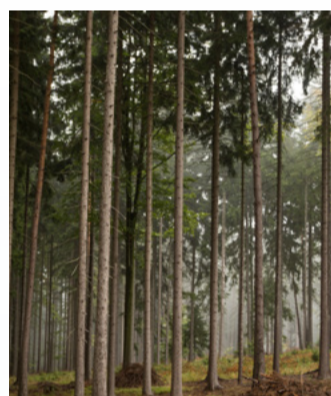
RESULTS OF ASSESSMENTS CANLYNIADAU ASESIADAU

Environmental Assessments have been carried out to identify and assess the likely or potential environmental effects of this proposed development.

This is an important process, which is developed and assessed in close consultation with relevant statutory bodies and technical consultees to ensure all potential effects are identified and that they are removed, or reduced to an acceptable level through scheme design.

Mae Asesiadau Amgylcheddol wedi'u cynnal i nodi ac asesu effeithiau tebygol neu bosibl ar yr amgylchedd yn deillio o'r datblygiad arfaethedig hwn.

Mae hon yn broses bwysig sy'n cael ei datblygu a'i hasesu gan ymgynghori'n fanwl â chyrrff statudol ac ymgynghoreion technegol perthnasol i sicrhau bod yr holl effeithiau posibl yn cael eu nodi ac yn cael eu diddymu, neu eu lleihau i lefel dderbyniol trwy gyfrwng dyluniad y cynllun.



The detailed results of these assessments are presented in the Environmental Statement in the draft planning application available to view on our website.

Cyflwynir canlyniadau manwl yr asesiadau hyn yn y Datganiad Amgylcheddol yn y cais cynllunio drafft sydd ar gael i'w weld ar ein gwefan.

Ecology

An assessment of the relevant potential effects upon ecology (excluding ornithology) is presented in **Chapter 6 of the Environmental Statement**.

A programme of baseline ecology surveys was undertaken between August 2020 and May 2022, following the most relevant industry guidelines, and incorporating relevant scoping responses.

Apart from losses of conifer plantation, the proposed development will lead to the loss of only small areas of various habitat types, with no significant effects on habitats predicted.

Indeed, it is considered that the measures described in the proposed development's Habitat Management Plan (HMP) will lead to an overall biodiversity net benefit, through the restoration of broadleaved woodland, the expansion of grassland areas, the removal of invasive species, etc.

Control shall be put in place during construction through creation of a site-specific Construction Environment Management Plan (CEMP), Species Protection Plans (SPP) and appointing an Environmental Clerk of Works (ECOW) to monitor adherence to such plans.

Ecoleg

Cyflwynir asesiad o'r effeithiau posibl perthnasol ar ecoleg (ac eithrio adareg) ym Mhennod 6 y Datganiad Amgylcheddol.

Cynhaliwyd rhaglen o arolygon ecoleg sylfaenol rhwng Awst 2020 a Mai 2022, gan ddilyn canllawiau mwyaf perthnasol y diwydiant, ac ymgorffori ymatebion cwmpasu perthnasol.

Yn ogystal â cholli planhigfeydd conwydd, bydd y datblygiad arfaethedig yn arwain at gollu mannau bach yn unig ble ceir gwahanol fathau o gynefinoedd, ac ni ragwelir unrhyw effeithiau sylweddol ar gynefinoedd.

Yn wir, ystyrir y bydd y mesurau a ddisgrifir yng Nghynllun Rheoli Cynefinoedd (HMP) y datblygiad arfaethedig yn arwain at fudd cyffredinol o ran bioamrywiaeth, trwy adfer coetir llydanddaill, ehangu llecynnau glaswelltir, cael gwared ar rywogaethau ymledol, ac ati.

Bydd dulliau rheoli yn cael eu gweithredu yn ystod y gwaith adeiladu trwy greu Cynllun Rheoli Amgylchedd Adeiladu (CEMP) safle-benodol a Chynlluniau Gwarchod Rhywogaethau (SPP), a phenodir Clerc Gwaith Amgylcheddol (ECOW) i fonitro ymlyniad at gynlluniau o'r fath.

Ornithology

An assessment of the relevant potential effects upon ornithology are presented in **Chapter 7 of the Environmental Statement**.

A programme of baseline ornithology survey was undertaken between October 2019 and August 2021, following the most relevant industry guidelines and incorporating relevant scoping responses.

Vantage point surveys recorded flights from a total of 15 target species. Many of these were recorded in only very small numbers. Following Collision Risk Modelling (CRM), collision risk is predicted to have no significant effect on the population of any bird species.

The breeding bird surveys recorded a typical community of mostly woodland and scrub dwelling species. Embedded mitigation measures that shall be incorporated into the construction of the proposed development shall minimise the impacts on breeding birds. The potential disturbance and displacement effects caused by the proposed development are predicted to have no significant effect on the population of any bird species.

A Species Protection Plan (SPP) shall be included as part of the Construction Environmental Management Plan (CEMP). In addition, the measures described in the proposed development's HMP.

Adareg

Cyflwynir asesiad o'r effeithiau posibl perthnasol ar adareg ym Mhennod 7 y Datganiad Amgylcheddol.

Cynhaliwyd rhaglen arolyg adareg sylfaenol rhwng Hydref 2019 ac Awst 2021, gan ddilyn canllawiau mwyaf perthnasol y diwydiant a gan ymgorffori ymatebion cwmpasu perthnasol.

Cofnododd arolygon a wnaed o olygfannau hediadau gan gyfanswm o 15 o rywogaethau targed. Yn achos llawer o'r rhywogaethau hyn, cofnodwyd niferoedd bychan iawn yn unig. Yn dilyn Modelu Risg Gwrthdrawiadau (CRM), ni ragwelir y bydd risg o wrthdrawiadau yn cael unrhyw effaith arwyddocaol ar boblogaeth unrhyw rywogaeth o adar.

Cofnododd yr arolygon o adar magu gymuned nodweddiadol o rywogaethau sy'n byw mewn coetiroedd a phrysgwydd yn bennaf. Bydd mesurau lliniaru sefydledig a fydd yn cael eu hymgorffori yn y gwaith o adeiladu'r datblygiad arfaethedig yn lleihau'r effeithiau ar adar sy'n magu. Ni ragwelir y bydd yr aflonyddu a'r dadleoli posibl a achosir gan y datblygiad arfaethedig yn cael unrhyw effaith arwyddocaol ar boblogaeth unrhyw rywogaeth o adar.

Bydd Cynllun Gwarchod Rhywogaethau (SPP) yn cael ei gynnwys fel rhan o'r Cynllun Rheoli Amgylcheddol Adeiladu (CEMP). Yn ogystal, y mesurau a ddisgrifir yn HMP y datblygiad arfaethedig.



Image of wind turbines for indicative purposes only

Landscape and Visual Impact

An assessment of the relevant potential effects upon seascape, landscape and visual amenity (SLVIA) are presented in **Chapter 8 of the Environmental Statement**.

The SLVIA covers a 45km study area, and included a desk study, site visits, Zone of Theoretical Visibility (ZTV) analysis, viewpoint photographs, wirelines and photomontages to illustrate the proposed development from the viewpoints included. Relevant guidance has been followed.

'Significant' individual and cumulative effects are identified on a number of local landscape character areas (LCAs), including the host LCAs for the proposed development.

'Significant' effects are predicted from a number of local designations, as well as from limited sections of St Illtyd's Walk and Ogwr Ridgeway Walk.

Significant individual and cumulative visual effects are identified from 17 of the total 37 representative viewpoints. Of these, 10 are located within approximately 3km of the proposed development. We have sought to minimise visual effects wherever possible through scheme design, however, at such close distance, effects of this nature are to be anticipated for a development of this type.

Effaith ar y Dirwedd a'r Effaith ar Olygfeydd

Cyflwynir asesiad o'r effeithiau posibl perthnasol ar forwedd, tirwedd ac amwynder gweledol (SLVIA) ym Mhennod 8 y Datganiad Amgylcheddol.

Mae'r SLVIA yn cwmpasu ardal astudio 45km, ac roedd yn cynnwys astudiaeth bwrdd gwaith, ymweliadau â'r safle, dadansoddiad Parth Cweledd Damcaniaethol (ZTV), ffotograffau a dynnwyd o olygfannau, llinellau gwifren a ffotogyfoddiadau i ddangos y datblygiad arfaethedig o'r golygfannau a gynhwyswyd. Mae canllawiau perthnasol wedi'u dilyn.

Mae effeithiau unigol a chronnol sylweddol wedi'u nodi ar nifer o ardaloedd cymeriad tirwedd lleol (ACT), gan gynnwys yr ACT ble lleolir y datblygiad arfaethedig.

Mae effeithiau gweledol unigol a chronnol sylweddol wedi'u nodi o 17 o blith cyfanswm o 37 o olygfannau cynrychioliadol. O'r rhain, mae 10 wedi'u lleoli o fewn tua 3km i'r datblygiad arfaethedig. Ar bellter mor agos, gellir rhagweld effeithiau o'r arwyddocâd hwn yn achos datblygiad o'r math hwn.

Rhagwelir effeithiau sylweddol o nifer o ddynodiadau lleol, yn ogystal ag o'rannau cyfyngedig o Lwybr Sant Illtyd a Lwybr Cerdded Cefnffordd Ogwr.



To get in touch or find out more:

info@ybryn-windfarm.cymru

0800 699 0081 (Freephone)

www.ybryn-windfarm.cymru

@ybrynwindfarm

RESULTS OF ASSESSMENTS CANLYNIADAU ASESIADAU

Cultural Heritage

An assessment of the potential effects on cultural heritage are presented in **Chapter 9 of the Environmental Statement**

Baseline information on the known archaeological resource and potential for currently undiscovered archaeological remains were gathered within a 2km study area, together with information on designated historic assets within a 20km study area. The results of these studies formed an Archaeological Desk-Based Assessment and Stage 1 Setting Assessment which is presented at Appendix A9.1 in the Environment Statement. The baseline information was used to inform the design of the proposed development to minimise impacts on historic assets.

No significant construction phase effects are predicted, but any impacts will be mitigated through a programme of archaeological monitoring and recording.

Significant operational phase effects are limited to direct impacts on Margam Mountain registered landscape.

Hydrology, Geology and Hydrogeology

An assessment of the potential effects on the hydrological, geological and hydrogeological environment is presented in **Chapter 10 of the Environmental Statement**

The scope and methodology was agreed with statutory consultees. These included walkover surveys where hydrologists inspected watercourse crossings and other hydrological features, and two rounds of peat surveys to confirm presence and depth of peat. Site surveys were also undertaken as part of the Coal Mining Risk Assessment (CMRA).

There are no significant effects predicted during either the construction or operation phases on any features.

Good practice during construction, adherence to a site-specific Construction Environment Management Plan (CEMP) as well as appointment of an Environmental Clerk of Works (ECOW) have been considered as embedded mitigation, and the Habitat Management Plan (HMP) proposed will improve natural flood management.

Noise

An assessment of the potential effects of noise are assessed in **Chapter 12 of the Environmental Statement**

An operational noise assessment has been undertaken by comparing predicted noise levels for a candidate turbine with the noise limits derived from baseline noise measurements carried out at 10 locations in the vicinity of the proposed development.

The assessment concludes that the proposed development can meet the relevant cumulative noise limits established from guidance.

Noise associated with the construction of the proposal has been predicted and found to confirm to the guideline values set out within British Standards.

Therefore, it is anticipated that with appropriate mitigation measures in place there will be no significant effects from noise as a result of the proposed development.

Trefadaeth ddiwylliannol

Cyflwynir asesiad o'r effeithiau posibl ar dreftadaeth ddiwylliannol ym Mhenod 9 y Datganiad Amgylcheddol.

Casglwyd gwybodaeth sylfaenol am yr adnodd archeolegol hysbys a'r potensial ar gyfer gweddillion archeolegol sydd heb eu darganfod eto o fewn ardal astudiaeth 2km, ynghyd â gwybodaeth am asedau hanesyddol dynodedig o fewn ardal astudiaeth 20km. Cynhwyswyd canlyniadau'r astudiaethau hyn mewn Asesiad Archeolegol Bwrdd Gwaith ac Asesiad Lleoliad Cam 1 a gyflwynir yn Atodiad A9.1 yn y Datganiad Amgylcheddol. Defnyddiwyd y wybodaeth sylfaenol i lywio dyluniad y datblygiad arfaethedig er mwyn lleihau effeithiau ar asedau hanesyddol.

Ni ragwelir unrhyw effeithiau sylweddol yn ystod y cyfnod adeiladu, ond bydd unrhyw effeithiau'n cael eu lliniaru trwy raglen o fonitro a chofnodi manau archeolegol.

Mae effeithiau sylweddol y cyfnod gweithredu wedi'u cyfyngu i effeithiau uniongyrchol ar dirwedd gofrestredig Mynydd Margam.

Hydroleg, daeareg a hydroddaeareg

Cyflwynir asesiad o'r effeithiau posibl ar yr amgylchedd hydrolegol, daearegol a hydroddaearegol ym Mhenod 10 y Datganiad Amgylcheddol.

Cytunwyd ar y cwmpas a'r fethodoleg ag ymgynghoreion statudol. Roedd y rhain yn cynnwys arolygon ar droed lle bu hydrolegwyr yn archwilio croesfannau cyrsiau dŵr a nodweddion hydrolegol eraill, a dwy rownd o arolygon o fawn i gadarnhau presenoldeb a dyfnder mawn. Cynhaliwyd arolygon safle hefyd fel rhan o'r Asesiad Risg Cloddio Glo (CMRA).

Ni ragwelir unrhyw effeithiau sylweddol yn ystod y cyfnodau adeiladu a gweithredu ar unrhyw nodweddion.

Bydd arfer da yn ystod y gwaith adeiladu, cadw at CEMP safle-benodol yn ogystal â phenodi ECoW wedi'u hystyried yn fesurau lliniaru sefydledig, a bydd y Cynllun Rheoli Cynefinoedd a gynigir yn gwella dulliau naturiol o reoli llifogydd.

Sŵn

Caiff asesiad o'r effeithiau posibl sŵn ei asesu ym Mhenod 12 y Datganiad Amgylcheddol.

Mae asesiad sŵn gweithredol wedi'i gynnal trwy gymharu lefelau'r sŵn a ragwelir ar gyfer darpar dyrbin â'r terfynau sŵn sy'n deillio o fesuriadau sŵn sylfaenol a gynhaliwyd mewn 10 lleoliad yng nghyffiniau'r datblygiad arfaethedig.

Daw'r asesiad i'r casgliad y gall y datblygiad arfaethedig gyd-fynd â'r terfynau sŵn cronol perthnasol a bennwyd mewn canllawiau.

Mae sŵn sy'n gysylltiedig ag adeiladu'r cynnig wedi'i ragweld a chanfuwyd ei fod yn cadarnhau'r gwerthoedd awgrymedig a nodir yn y Safonau Prydeinig.

Felly, â mesurau lliniaru priodol yn eu lle, rhagwelir na fydd unrhyw effeithiau sylweddol yn deillio o sŵn o ganlyniad i'r datblygiad arfaethedig.

Forestry

An assessment of the potential effects upon forested land managed by Natural Resources Wales (NRW) are assessed in **Chapter 13 of the Environmental Statement**

The scope and methodology of the assessment was agreed with statutory consultees. The applicant worked with NRW to reduce the area of forest directly impacted by agreeing a keyhole felling approach rather than coupe felling resulting in only targeted tree removal in areas around each turbine and for access.

The total felling required for the proposed development is 1197 hectares (ha), which represented 4.7% of the study area. 14.6ha will be available post construction for replanting, therefore resulting in a total net forestry loss of 105.1ha. However, as a result of Welsh Government implementing planting under the compensatory fund, there will be no net loss of trees owing to the proposed development.

There will be no designated Ancient Woodland lost as a result of the proposed development.

The proposed felling for the scheme is shown to be of a smaller scale than existing approved felling across the approved period in the NRW felling plan.

Coedwigoedd

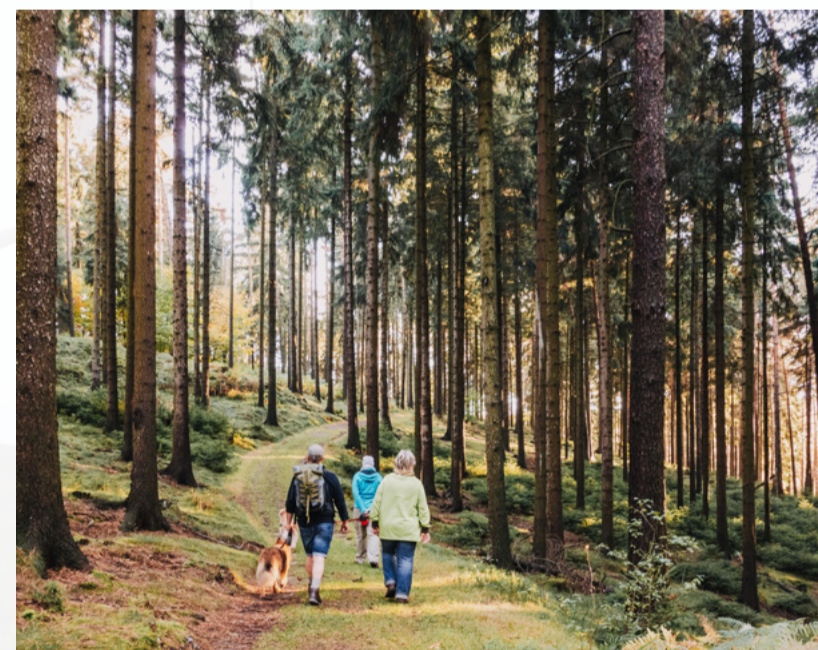
Asesir asesiad o'r effeithiau posibl ar dir coediog a reolir gan CNC ym Mhenod 13 y Datganiad Amgylcheddol.

Cytunwyd ar gwmpas a methodoleg yr asesiad ag ymgynghoreion statudol. Bu'r ymgeisydd yn cydweithio â CNC i leihau'r llecyn coediog yr effeithir arno'n uniongyrchol drwy gytuno ar ddull cwmpo twll clo yn hytrach na chwmpo llecynnau mawr o goed.

Bydd angen torri cyfanswm o 1197 hectar (ha) o goed ar gyfer y datblygiad arfaethedig, sef 4.7% o ardal yr astudiaeth. Bydd 14.6ha ar gael ar ôl y gwaith adeiladu ar gyfer ailblannu, gan arwain at gyfanswm colled coed net o 105.1ha. Fodd bynnag, o ganlyniad i waith plannu gan LIC yn unol â'r gronfa iawndal, ni fydd unrhyw colled net o goed oherwydd y datblygiad arfaethedig.

Ni fydd unrhyw Goetir Hynafol dynodedig yn cael ei golli o ganlyniad i'r datblygiad arfaethedig.

Dangosir bod y gwaith torri coed arfaethedig ar gyfer y datblygiad arfaethedig ar radd fa lai na'r gwaith torri coed a gymeradwywyd ar hyn o bryd trwy gydol y cyfnod a gymeradwywyd yng nghynllun torri coed CNC.



Other Existing Infrastructure

An assessment of the potential effects upon existing infrastructure are assessed in **Chapter 15 of the Environmental Statement**

This provides an assessment of potential impacts on: telecommunications, utilities, public rights of way (PROW) and permissive routes, and other recreation routes.

Baseline conditions were identified in consultation with link operators, PROW offices and relevant consultees.

With regards to impacts on the amenity use of the forest, the construction phase will result in a short-term closure of some sections of PROW, permissive routes and other recreation routes including mountain bike trails.

The applicant will work with the relevant local planning authorities (LPAs) and NRW to mitigate any impacts and to explore ways to enhance these sections of the routes/trails and in some instances provide temporary alternative routes, under an Access Management and Enhancement Plan (AMEP).

Through mitigation and improvement, no significant effects are predicted during the operational phase on existing infrastructure.

Seilwaith presennol arall

Asesir asesiad o'r effeithiau posibl ar y seilwaith presennol ym Mhenod 15 yn y Datganiad Amgylcheddol.

Mae'n darparu asesiad o'r effeithiau posibl ar: delathrebu, cyfleustodau, hawliau tramwy cyhoeddus (HTC) a llwybrau caniaol, a llwybrau hamdden eraill.

Nodwyd cyflwr sylfaenol mewn ymgynghoriaid â gweithredwyr cyswllt, swyddfeydd HTC ac ymgynghoreion perthnasol.

O ran yr effeithiau ar ddefnydd hamdden o'r goedwig, bydd y cyfnod adeiladu yn arwain at gau rhai rhannau o Hawliau Tramwy Cyhoeddus, llwybrau caniaol a llwybrau hamdden eraill gan gynnwys llwybrau beicio mynydd yn y tymor byr, ac felly, bydd yn effeithio'n sylweddol ar ymyn yn y byrdymor, ac ar fathau eraill o fynediad i rannau o'r goedwig at ddibenion hamddena.

Bydd yr ymgeisydd yn cydweithio â'r awdurdodau cynllunio lleol (ACL) perthnasol a CNC i lliniaru unrhyw effeithiau ac i archwilio ffyrdd o wella'r adrannau hyn o'r llwybrau, ac mewn rhai achosion, bydd yn darparu llwybrau amgen dros dro, yn unol â Chynllun Rheoli Mynediad (AMP).

Trwy lliniaru a gwella, ni ragwelir unrhyw effeithiau sylweddol yn ystod y cyfnod gweithredu ar y seilwaith presennol.

To get in touch or find out more:

info@ybryn-windfarm.cymru

0800 699 0081 (Freephone)

www.ybryn-windfarm.cymru

@ybrynwindfarm

CONSTRUCTION, TRANSPORT AND DECOMMISSIONING ADEILADU, DATGOMISIYNU, CLUDIANT A THRAFFIG

Construction

You can find out more about the construction programme in **Chapter 5 of the Environmental Statement**.

It is anticipated that construction may take up to two years to be completed. The start date of the construction would depend on the projects approval.

The process would be subject to an approved Construction Method Statement (CMS) and Construction Environmental Management Plan (CEMP), both of which will be signed off and monitored by the relevant local authorities. Various other protective planning conditions will need to have been signed-off and adhered to prior to and during construction.

Adeiladu

Gallwch gael rhagor o wybodaeth am y rhaglen adeiladu ym Mhennod 5 yn y Datganiad Amgylcheddol.

Rhagwelir y bydd angen hyd at ddwy flynedd i gwblhau'r gwaith adeiladu. Byddai dyddiad cychwyn y gwaith adeiladu yn dibynnu ar y cymeradwyaeth a geir i'r prosiect.

Byddai'r broses yn amodol ar Ddatganiad Dull Adeiladu (CMS) a Chynllun Rheoli Amgylcheddol Adeiladu (CEMP) cymeradwy, a bydd y ddau ohonynt yn cael eu cymeradwyo a'u monitro gan yr awdurdodau lleol perthnasol. Bydd angen i amodau cynllunio amddiffynol amrywiol eraill fod wedi'u cymeradwyo a bydd yn rhaid glynu atynt cyn ac yn ystod y gwaith adeiladu.

Decommissioning

You can find out more about decommissioning in **Chapter 5 of the Environmental Statement**.

The lifespan of the project we are applying for is 50 years from the point of commissioning. During operation, the turbines and site infrastructure will be regularly assessed and maintained. At the stage of decommissioning, further assessments, surveys and management plans will be agreed upon with relevant authorities to ensure the safe removal of infrastructure and restoration of the site. It is expected that some tracks will be left in place to help support ongoing forestry management.

It is anticipated, given advances in technology, that turbines will be practically 100% recyclable come the time of decommissioning, including composite blades.

Datgomisiynu

Gallwch gael rhagor o wybodaeth am ddatgomisiynu ym Mhennod 5 yn y Datganiad Amgylcheddol.

Bydd oes y prosiect yr ydym yn ymgeisio amdano yn para 50 mlynedd gan gychwyn ar adeg ei gomisiynu. Yn ystod y cyfnod gweithredu, bydd y tyrbinau a seilwaith y safle yn cael eu hasesu a'u cynnal a'u cadw'n rheolaidd. Yn ystod y cam datgomisiynu, bydd asesiadau, arolygon a chynlluniau rheoli pellach yn cael eu cytuno â'r awdurdodau perthnasol i sicrhau bod y seilwaith yn cael ei symud oddi yno yn ddiogel ac er mwyn adfer y safle. Disgwylir y bydd rhai traciau'n cael eu gadael yn eu lle i helpu i gynorthwyo â gwaith rheoli parhaus yn y goedwig.

Rhagwelir, gan ystyried datblygiadau o ran technoleg, y bydd modd ailgylchu bron iawn 100% o'r tyrbinau ar adeg eu datgomisiynu, gan gynnwys llafnu cyfansawdd.



Transport and Traffic

You can find out more about transport and traffic in **Chapter 11 of the Environmental Statement**.

All routes and access options have been assessed to ensure minimal disruption to the local area. We have been working with the local highways authorities and technical consultees to ensure feasibility. The draft Traffic Management Plan contains further detailed information about the construction routes and access arrangements.

Cludiant a thraffig

Gallwch gael rhagor o wybodaeth am gludiant a thraffig ym Mhennod 11 y Datganiad Amgylcheddol.

Mae'r holl lwybrau a'r opsiynau mynediad wedi'u hasesu i sicrhau cyn lleied â phosibl o darfu ar yr ardal leol. Rydym wedi bod yn cydweithio â'r awdurdodau priffyrdd lleol ac ymgynghoreion technegol i sicrhau dichonoldeb. Mae fersiwn drafft y Cynllun Rheoli Traffig yn cynnwys rhagor o wybodaeth fanwl ynghylch y llwybrau adeiladu a'r trefniadau mynediad.



To get in touch or find out more:

info@ybryn-windfarm.cymru

0800 699 0081 (Freephone)

www.ybryn-windfarm.cymru

[@ybrynwindfarm](https://twitter.com/ybrynwindfarm)

PLANNING PROCESS AND POLICY Y BROSES CYNLLUNIO A PHOLISI CYNLLUNIO

All planning decisions require consideration of relevant material factors including any potential adverse environmental or other impacts of a proposal, at local or wider scale, as well as the recognised material benefits, particularly in terms of delivery against legislation, policy and other considerations. The draft Planning Statement which is available as part of this consultation sets out these considerations in detail, and we have summarised the key points on these boards.

Yn achos pob penderfyniad cynllunio, bydd angen ystyried ffactorau perthnasol gan gynnwys unrhyw effeithiau amgylcheddol andwyol posibl neu effeithiau eraill cynigion, yn lleol neu'n ehangach, yn ogystal â'r buddion penodol cydnabyddedig, yn enwedig o ran cyflawni yn unol â gofynion deddfwriaeth, polisi ac ystyriaethau eraill. Mae'r Datganiad Cynllunio drafft sydd ar gael fel rhan o'r ymgynghoriad hwn yn amlinellu'r ystyriaethau hyn yn fanwl, ac rydym wedi crynhoi'r pwyntiau allweddol ar y byrddau hyn.

Impacts

As addressed on other boards, we have identified that the key effects arising from the proposal are limited to changes in local landscape character and visibility of the scheme within relatively close distance. It is these effects which are to be considered alongside the material benefits of the proposal.

Effeithiau

Fel y trafodir ar fyrdau eraill, rydym wedi nodi bod yr effeithiau allweddol sy'n deillio o'r cynnig wedi'u cyfyngu i newidiadau yng nghymeriad y dirwedd leol ac amlygrwydd y cynllun o fewn pellter cymharol agos. Dylid ystyried yr effeithiau hyn ochr yn ochr â buddion penodol y cynnig.

Climate Change and Renewable Energy Policy

Wales has a legal commitment to reaching Net Zero by 2050, with legally binding interim Carbon Budgets. Welsh Government policy also currently seeks to generate 70% of Wales' electricity consumption from renewable sources by 2030, with a draft Zero Carbon Electricity target for 2035 matching the UK Government's.

There is currently forecast to be significant shortfall against these commitments, without delivery of major new schemes as soon as possible.

Polisi ynghylch y Newid yn yr Hinsawdd ac Ynni Adnewyddadwy

Mae gan Gymru ymrwymiad cyfreithiol i gyflawni Sero Net erbyn 2050, yn cynnwys Cyllidebau Carbon interim sy'n gyfreithiol rwyml. Mae polisi Llywodraeth Cymru hefyd ar hyn o bryd yn ceisio cynhyrchu 70% o'r trydan a ddefnyddir yng Nghymru o ffynonellau adnewyddadwy erbyn 2030, a cheir targed drafft ynghylch Trydan Di-Garbon ar gyfer 2035 sy'n cyfateb i darged Llywodraeth y DU.

Ar hyn o bryd, rhagwelir y bydd diffyg sylweddol o gymharu â'r ymrwymadau hyn, oni chyflawnir cynlluniau mawr newydd cyn gynted â phosibl.



Image of wind turbine for indicative purposes only

Planning Policy

Future Wales: The National Plan 2040 is the lead planning policy document. Decarbonisation through delivery of renewable energy is a key theme throughout.

Policy 18 contains the criteria for assessing the proposed development, namely that there will be "no unacceptable adverse impacts", where acceptability is a balance of the nature of impacts versus the scale and weight of benefits.

Visual impacts on nearby communities and individual dwellings have been minimised through the Design Evolution of the scheme (which is set out in full in Chapter 4 of the Environmental Statement).

Delivering the equivalent of 68% of household demand within the combined host local authority areas must be afforded significant weight.*

Polisi Cynllunio

Cymru'r Dyfodol: Cynllun Cenedlaethol 2040 yw'r brif ddogfen polisi cynllunio. Mae datgarboneiddio trwy gyflenwi ynni adnewyddadwy yn thema allweddol yn y ddogfen drwyddi draw.

Mae Polisi 18 yn cynnwys y meini prawf ar gyfer asesu'r datblygiad arfaethedig, sef "na fydd unrhyw effeithiau andwyol annerbiniol", lle mae derbynioldeb yn gydbwysedd o natur yr effeithiau a graddfa a phwysau'r buddion.

Mae effeithiau gweledol ar gymunedau cyfagos ac anheddau unigol wedi'u lleihau trwy Esblygiad Dyluniad y cynllun (a nodir yn llawn ym Mhennod 4 y Datganiad Amgylcheddol).

Rhaid rhoi pwysau sylweddol i gyflenwi'r hyn sy'n cyfateb i 68% o'r galw gan aelwydydd yn ardaloedd cyfun yr awdurdodau lleol ble lleolir y datblygiad.

Conclusions

Y Bryn is a major renewable energy scheme with relatively limited significant effects, close to centres of demand, which can make a substantial contribution towards legal and policy targets as well as providing significant biodiversity net benefit, community benefits and local investment.

Casgliadau

Mae Y Bryn yn gynllun ynni adnewyddadwy mawr sydd ag effeithiau sylweddol cymharol gyfyngedig, yn agos at fannau ble ceir galw, a all wneud cyfraniad sylweddol tuag at dargedau cyfreithiol a pholisi yn ogystal â darparu budd net sylweddol o ran bioamrywiaeth, budd cymunedol a buddsoddiad lleol.



To get in touch or find out more:

info@ybryn-windfarm.cymru

0800 699 0081 (Freephone)

www.ybryn-windfarm.cymru

@ybrynwindfarm

COMMUNITY OWNERSHIP AND COMMUNITY BENEFIT PERCHNOGAETH GYMUNEDOL A BUDD CYMUNEDOL



We are grateful for the feedback received at the first and second phases of consultation on the initial proposal for Y Bryn, specifically the comments in relation to our proposed approach to community benefit and community ownership – both of which are a high priority for the project.

Rydym yn ddiolchgar am yr adborth a gawsom yn ystod cam cyntaf a'r ail gam o ymgynghori ynghylch y cynnig gwreiddiol i ddatblygu Y Bryn, yn enwedig y sylwadau ynghylch ein dull arfaethedig o ymdrin â budd cymunedol a pherchnogaeth gymunedol, dwy elfen sydd ymhlith blaenoriaethau pennaf y prosiect.

Awel y Bryn Co-op

BAVO
Bridgend Association of Voluntary Organisations
Cydnwbiaeth Seipolusolau Gwreiddiol Pen-y-bont ar Ogwr

NPTCVS
NEATH PORT TALBOT
CASTELL-NEDD PORT TALBOT



The project has reached agreement to establish the 'Awel y Bryn Co-op', alongside Awel Aman Tawe (AAT), Neath Port Talbot Council for Voluntary Service (NPTCVS) and Bridgend Association of Voluntary Organisations (BAVO) which will enable the Community Ownership Scheme and Benefit Fund.

We have committed to delivering £8,000/MW (per Mega Watt) to the community benefit fund, which could be in the region of £1million per year for the lifetime of the project.

The Co-op will also offer a stake of up to 20% for local ownership (10% local individuals and community groups, and 10% for public sector bodies to invest in).

Mae'r prosiect wedi dod i gytundeb i sefydlu 'Cydweithfa Awel y Bryn' ar y cyd ag Awel Aman Tawe (AAT), Cyngor Gwasanaethau Gwirfoddol Castell-nedd Port Talbot (NPTCVS) a Chymdeithas Mudiadau Gwirfoddol Pen-y-bont ar Ogwr (BAVO) a fydd yn galluogi'r Cymllun Perchnogaeth Gymunedol a'r Gronfa Budd Cymunedol.

Rydym wedi ymrwymo i ddarparu £8,000/MW (fesul Mega Watt) i'r gronfa budd cymunedol, a gallai hynny olygu oddeutu £1 miliwn y flwyddyn yn ystod oes y prosiect.

Bydd y Gydweithfa hefyd yn cynnig cyfran o hyd at 20% ar gyfer perchnogaeth leol (10% ar gyfer unigolion a grwpiau cymunedol lleol, a 10% i gyrrff y sector cyhoeddus fuddsoddi ynddynt).

Community Benefit

If the project is approved, the new 'Awel y Bryn Co-op' will have a contractual relationship with NPTCVS and BAVO to manage the community benefit funds.

The industry leading Community Benefit Fund could total upwards of £1million per year for the lifetime of the Project – one of the largest community benefit funds in the UK from an onshore wind project of this nature.

To find out more about NPTCVS please visit:

www.nptcvs.wales

To find out more about BAVO, please visit:

www.bavo.org.uk

Budd Cymunedol

Os bydd y prosiect yn cael ei gymeradwyo, bydd gan 'Cydweithfa Awel y Bryn' newydd berthynas gytundebol â NPTCVS a BAVO i reoli'r cronfeydd budd cymunedol.

Gallai'r Gronfa Budd Cymunedol arloesol hon sicrhau hyd at £1miliwn y flwyddyn yn ystod oes y Prosiect – un o'r cronfeydd budd cymunedol mwyaf yn y DU yn deillio o brosiect gwynt ar y tir o'r natur hwn.

I gael rhagor o wybodaeth am NPTCVS, ewch i:

www.nptcvs.wales

I gael rhagor o wybodaeth am BAVO, ewch i:

www.bavo.org.uk



Image of wind turbine for indicative purposes only

Community Ownership

Through Awel y Bryn Co-op, up to a fifth of the Project will be available for community and public sector ownership, which will contribute greatly to Welsh Government targets of having at least 1GW of renewable energy in community ownership by 2030 and 1.5GW by 2035. Given the nature of the project, the Y Bryn ownership model would be one of the largest part-owned community projects in the UK.

Local people would benefit both financially as well as socially through the good causes that the Co-op would support. To find out more about AAT, please visit:

www.awelamantawe.org.uk

Perchnogaeth Gymunedol

Trwy Gydweithfa Awel y Bryn, bydd hyd at un rhan o bump o'r Prosiect ar gael ar gyfer perchnogaeth gymunedol a gan y sector cyhoeddus, a bydd hynny'n cyfrannu'n sylweddol at dargedau Llywodraeth Cymru i sicrhau o leiaf 1GW o ynni adnewyddadwy mewn perchnogaeth gymunedol erbyn 2030 a 1.5GW erbyn 2035. Gan ystyried natur y prosiect, model perchnogaeth Y Bryn fyddai un o'r prosiectau cymunedol rhan-perchnogaeth mwyaf yn y DU.

Buasai pobl leol yn elwa yn ariannol ac yn gymdeithasol trwy gyfrwng yr achosion da y buasai'r Gydweithfa yn eu cefnogi. I ddysgu rhagor am AAT, ewch i:

www.awelamantawe.org.uk



To get in touch or find out more:

info@ybryn-windfarm.cymru

0800 699 0081 (Freephone)

www.ybryn-windfarm.cymru

@ybrynwindfarm

NEXT STEPS CAMAU NESAF

Thank you for taking the time to visit this exhibition and find out more about our proposal. We are keen to hear your views, so please fill out a feedback form which can be returned in a variety of ways.

Diolch am dreulio amser yn ymweld â'r arddangosfa hwn i gael rhagor o wybodaeth am ein cynnig. Rydym yn awyddus i gael gwybod beth yw eich safbwyntiau, felly busem yn ddiolchgar pe gallech lenwi ffurflen adborth y gellir ei dychwelyd atom trwy sawl dull.

You can also get in touch to send us your thoughts via:
Gallwch hefyd gysylltu i anfon eich barn atom drwy:



Project website/Wefan y prosiect

Project documents and plans detailing the nature and location of the project are available at www.ybryn-windfarm.cymru

Wefan y prosiect - mae dogfennau'r prosiect a chynlluniau yn disgrifio natur a lleoliad y prosiect ar gael yn www.ybryn-windfarm.cymru



Email/E-bost

Written feedback can be provided utilising the project email address info@ybryn-windfarm.cymru

E-bost - gellir cynnig adborth ysgrifenedig gan ddefnyddio cyfeiriad e-bost y prosiect, info@ybryn-windfarm.cymru



Feedback forms/Ffurflenni adborth

Available online via the project website, or at the public exhibitions. Alternatively, get in touch and request a hard copy and we will post it to you www.ybryn-windfarm.cymru

Ffurflenni adborth - maent ar gael ar wefan y prosiect neu yn yr arddangosfeydd cyhoeddus. Fel arall, cysylltwch â ni a gofynnwch am gopi caled ac fe wnawn ni ei bostio atoch www.ybryn-windfarm.cymru/



Freepost/Rhadbost

Written feedback can be provided utilising the project freepost address **FREEPOST TC CONSULTATION** (no further address or stamp required)

Rhadbost - gellir darparu adborth ysgrifenedig gan ddefnyddio cyfeiriad rhadbost y project **FREEPOST TC CONSULTATION** (nid oes angen unrhyw gyfeiriad ychwanegol na stamp)



Freephone/Rhadffôn

Opportunities to speak with the project team and seek further information or provide verbal feedback can be achieved via the project freephone number **0800 699 0081** during normal office hours (Monday to Friday 9am to 5pm excluding public holidays)

Rhadffôn - gellir sicrhau cyfleoedd i siarad â thîm y prosiect a chael gwybodaeth ychwanegol neu gynnig adborth ar lafar trwy rif rhadffôn y prosiect, sef **0800 699 0081**, yn ystod oriau swyddfa arferol (dydd Llun i ddydd Gwener 9am - 5pm ac eithrio gwyliau cyhoeddus)



Image of wind turbines for indicative purposes only

The deadline for responses to this consultation is **Monday 17 July 2023**. Once we have received this feedback it will be analysed as a part of a Pre-Application Consultation Report that will be submitted as a part of the application.

Y dyddiad cau i ymateb i'r ymgynghoriad hwn yw **dydd Llun 17 Gorffennaf 2023**. Pan fyddwn wedi cael yr adborth hwn, bydd yn cael ei ddadansoddi fel rhan o Adroddiad Ymgynghori Cyn Ymgeisio a fydd yn cael ei gyflwyno fel rhan o'r cais.

To get in touch or find out more:

info@ybryn-windfarm.cymru

0800 699 0081 (Freephone)

www.ybryn-windfarm.cymru

[@ybrynwindfarm](https://twitter.com/ybrynwindfarm)