

OUR REFINED PROPOSAL EIN CYNNIG DIWYGIEDIG

Changes from Autumn 2021 to Pre-Application Consultation

The plan on this board illustrates how we have developed our proposals in response to feedback and further survey and assessment work. We have sought to address key issues, including:

- Reducing the number of proposed turbines from 21 to 18 to reduce visibility impact.
- Removed associated access tracks, crane pads to the removed turbines.
- Reducing tip height for T9 from 250m to 230m, to reduce visibility impact from Bryn village.
- Reducing tip heights for T16 and T17 from 250m to 206m.
- Relocating turbines 8 and 9 to reduce visibility from Bryn village.
- Redesigning tracks to turbines after relocation.
- Borrow pits around T8 and T9 were redesigned.
- Changes were made to the tree felling plan and habitat enhancement plans following further assessments and agreements.

Biodiversity Net Benefit

We have also been working hard to identify specific measures to help deliver a Biodiversity Net Benefit. These include:

- Restoration of broadleaved woodland
- Creation of open ground
- Bracken control
- Pond creation
- Wet woodland restoration
- Removal of invasive species

Access Management and Enhancement

Working in collaboration with NRW (as land manager), we have identified a number of measures to provide enhancement to existing recreational resources:

- Restoration of local PROs
- Upgrading of the Penhydd and Blue Scar trails
- Measures to promote greater use of e-Bikes, including potential installation of charging stations in agreed locations
- Exploring measures to provide and promote a strategic link between Afan Forest Park and Margam Park trails

All of the above measures will be supported by a new Access Management and Enhancement (AMEP) Fund.

Newidiadau o Hydref 2021 i'r Ymgynghoriad Cyn Ymgeisio

Mae'r cynllun ar y bwrdd hwn yn dangos sut rydym wedi datblygu ein cynnig mewn ymateb i adborth a rhagor o arolygu ac asesu. Rydym wedi ceisio mynd i'r afael â materion allweddol, gan gynnwys:

- Lleihau nifer y tyrbinau arfaethedig o 21 i 18 i leihau'r effaith ar olygfeydd.
- Diddymu traciau mynediad cysylltiedig a phadiau craeniau'r tyrbinau sydd wedi'u diddymu.
- Lleihau uchder blaenau T9 o 250m i 230m, er mwyn lleihau'r effaith ar olygfeydd o bentref Bryn.
- Lleihau uchder y blaenau T16 a T17 o 250m i 206m.
- Adleoli tyrbinau 8 a 9 i sicrhau eu bod yn llai amlwg o bentref Bryn.
- Ailgynllunio traciau at dyrbinau ar ôl eu hadleoli.
- Cafodd pyliau benthyg o amgylch T8 a T9 eu hailgynllunio.
- Gwnaethpwyd newidiadau i'r cynllun torri coed ac i gynlluniau gwella cynefinoedd yn dilyn rhagor o asesiadau a chytundebau.

Budd Net o ran Bioamrywiaeth

- Adfer coetir llydanddail
- Creu tir agored
- Rheoli rhedyn
- Creu pwll
- Adfer coetir gwlyb
- Cael gwared ar rywogaethau ymledol

Rheoli a Gwella Mynediad

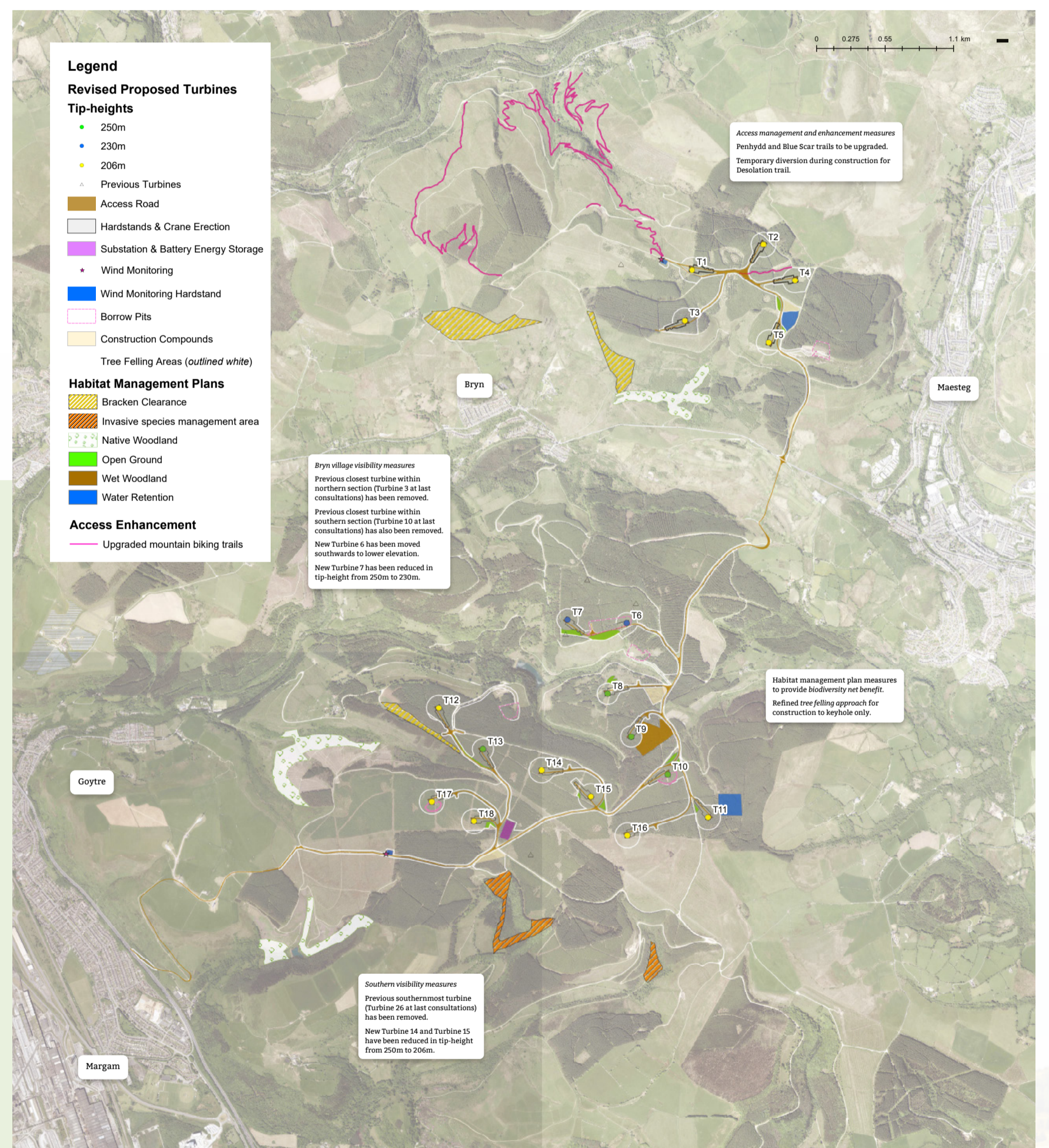
Gan weithio ar y cyd â CNC (fel rheolwr tir), rydym wedi nodi nifer o fesurau i wella adnoddau hamdden presennol:

- Adfer Hawliau Tramwy Cyhoeddus lleol
- Uwchraddio llwybrau Penhydd a Blue Scar
- Mesurau i hyrwyddo mwy o ddefnydd o e-Feiciau, gan gynnwys y posibilrwydd o osod gorsafoedd gwefru mewn lleoliadau y cytunwyd arnynt
- Archwilio mesurau i ddarparu a hyrwyddo cyswilt strategol rhwng llwybrau Parc Coedwig Afan a Pharc Margam

Bydd yr holl fesurau uchod yn cael eu cefnogi gan Gronfa Rheoli a Gwella Mynediad newydd.



Image of wind turbine for indicative purposes only



To get in touch or find out more:

info@ybryn-windfarm.cymru

0800 699 0081 (Freephone)

www.ybryn-windfarm.cymru

@ybrynwindfarm