

## CONSTRUCTION, TRANSPORT AND DECOMMISSIONING ADEILADU, DATGOMISIYNU, CLUDIANT A THRAFFIG

### Construction

You can find out more about the construction programme in **Chapter 5 of the Environmental Statement**.

It is anticipated that construction may take up to two years to be completed. The start date of the construction would depend on the projects approval.

The process would be subject to an approved Construction Method Statement (CMS) and Construction Environmental Management Plan (CEMP), both of which will be signed off and monitored by the relevant local authorities. Various other protective planning conditions will need to have been signed-off and adhered to prior to and during construction.

### Adeiladu

Gallwch gael rhagor o wybodaeth am y rhaglen adeiladu ym Mhennod 5 yn y Datganiad Amgylcheddol.

Rhagwelir y bydd angen hyd at ddwy flynedd i gwblhau'r gwaith adeiladu. Byddai dyddiad cychwyn y gwaith adeiladu yn dibynnu ar y cymeradwyaeth a geir i'r prosiect.

Byddai'r broses yn amodol ar Ddatganiad Dull Adeiladu (CMS) a Chynllun Rheoli Amgylcheddol Adeiladu (CEMP) cymeradwy, a bydd y ddau ohonynt yn cael eu cymeradwyo a'u monitro gan yr awdurdodau lleol perthnasol. Bydd angen i amodau cynllunio amddiffynol amrywiol eraill fod wedi'u cymeradwyo a bydd yn rhaid glynu atynt cyn ac yn ystod y gwaith adeiladu.

### Decommissioning

You can find out more about decommissioning in **Chapter 5 of the Environmental Statement**.

The lifespan of the project we are applying for is 50 years from the point of commissioning. During operation, the turbines and site infrastructure will be regularly assessed and maintained. At the stage of decommissioning, further assessments, surveys and management plans will be agreed upon with relevant authorities to ensure the safe removal of infrastructure and restoration of the site. It is expected that some tracks will be left in place to help support ongoing forestry management.

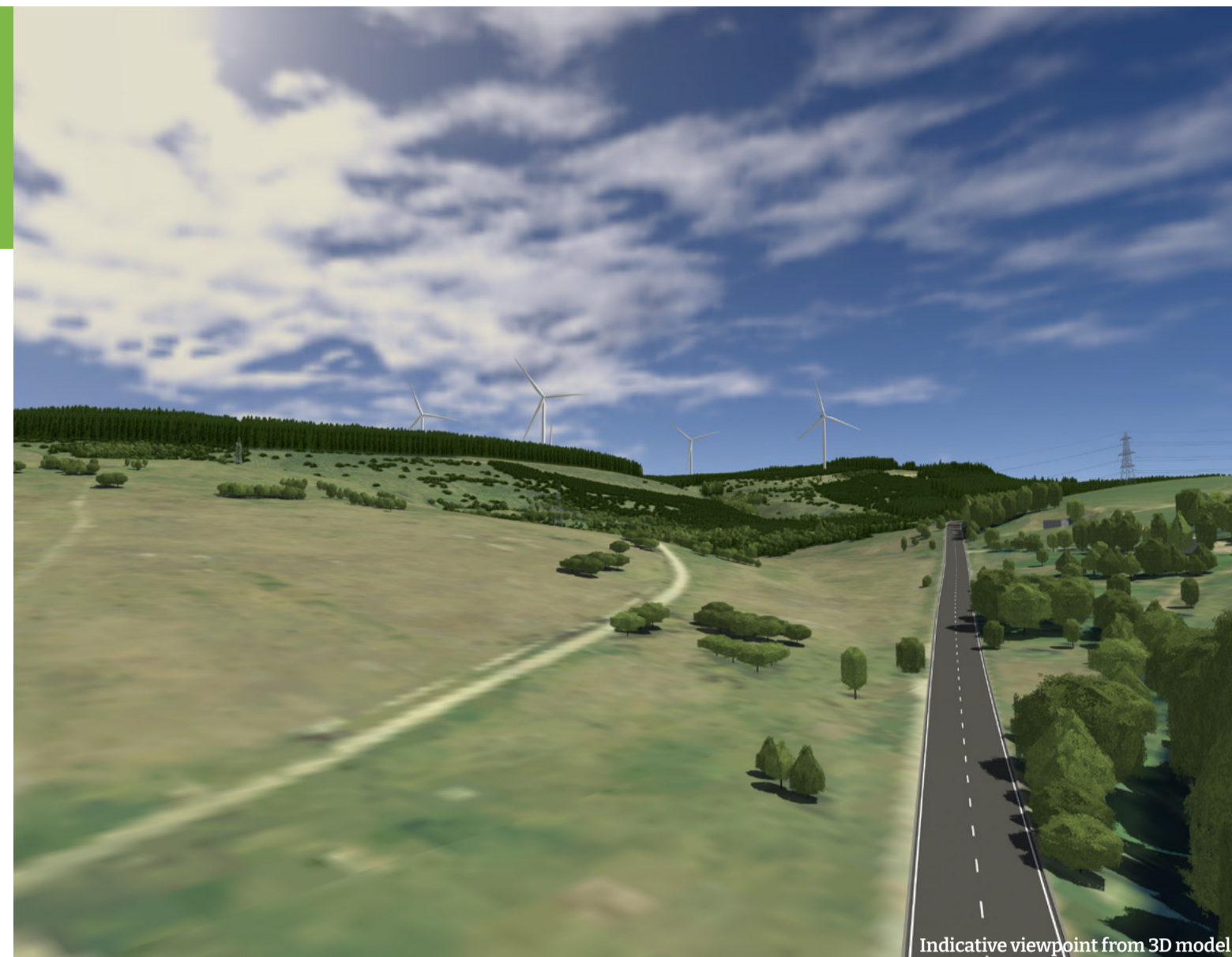
It is anticipated, given advances in technology, that turbines will be practically 100% recyclable come the time of decommissioning, including composite blades.

### Datgomisiynu

Gallwch gael rhagor o wybodaeth am ddatgomisiynu ym Mhennod 5 yn y Datganiad Amgylcheddol.

Bydd oes y prosiect yr ydym yn ymgeisio amdano yn para 50 mlynedd gan gychwyn ar adeg ei gomisiynu. Yn ystod y cyfnod gweithredu, bydd y tyrbinau a seilwaith y safle yn cael eu hasesu a'u cynnal a'u cadw'n rheolaidd. Yn ystod y cam datgomisiynu, bydd asesiadau, arolygon a chynlluniau rheoli pellach yn cael eu cytuno â'r awdurdodau perthnasol i sicrhau bod y seilwaith yn cael ei symud oddi yno yn ddiogel ac er mwyn adfer y safle. Disgwylir y bydd rhai traciau'n cael eu gadael yn eu lle i helpu i gynorthwyo â gwaith rheoli parhaus yn y goedwig.

Rhagwelir, gan ystyried datblygiadau o ran technoleg, y bydd modd ailgylchu bron iawn 100% o'r tyrbinau ar adeg eu datgomisiynu, gan gynnwys llafnu cyfansawdd.



### Transport and Traffic

You can find out more about transport and traffic in **Chapter 11 of the Environmental Statement**.

All routes and access options have been assessed to ensure minimal disruption to the local area. We have been working with the local highways authorities and technical consultees to ensure feasibility. The draft Traffic Management Plan contains further detailed information about the construction routes and access arrangements.

### Cludiant a thraffig

Gallwch gael rhagor o wybodaeth am gludiant a thraffig ym Mhennod 11 y Datganiad Amgylcheddol.

Mae'r holl lwybrau a'r opsiynau mynediad wedi'u hasesu i sicrhau cyn lleied â phosibl o darfu ar yr ardal leol. Rydym wedi bod yn cydweithio â'r awdurdodau priffyrdd lleol ac ymgynghoreion technegol i sicrhau dichonoldeb. Mae fersiwn drafft y Cynllun Rheoli Traffig yn cynnwys rhagor o wybodaeth fanwl ynghylch y llwybrau adeiladu a'r trefniadau mynediad.



To get in touch or find out more:

[info@ybryn-windfarm.cymru](mailto:info@ybryn-windfarm.cymru)

0800 699 0081 (Freephone)

[www.ybryn-windfarm.cymru](http://www.ybryn-windfarm.cymru)

[@ybrynwindfarm](https://twitter.com/ybrynwindfarm)